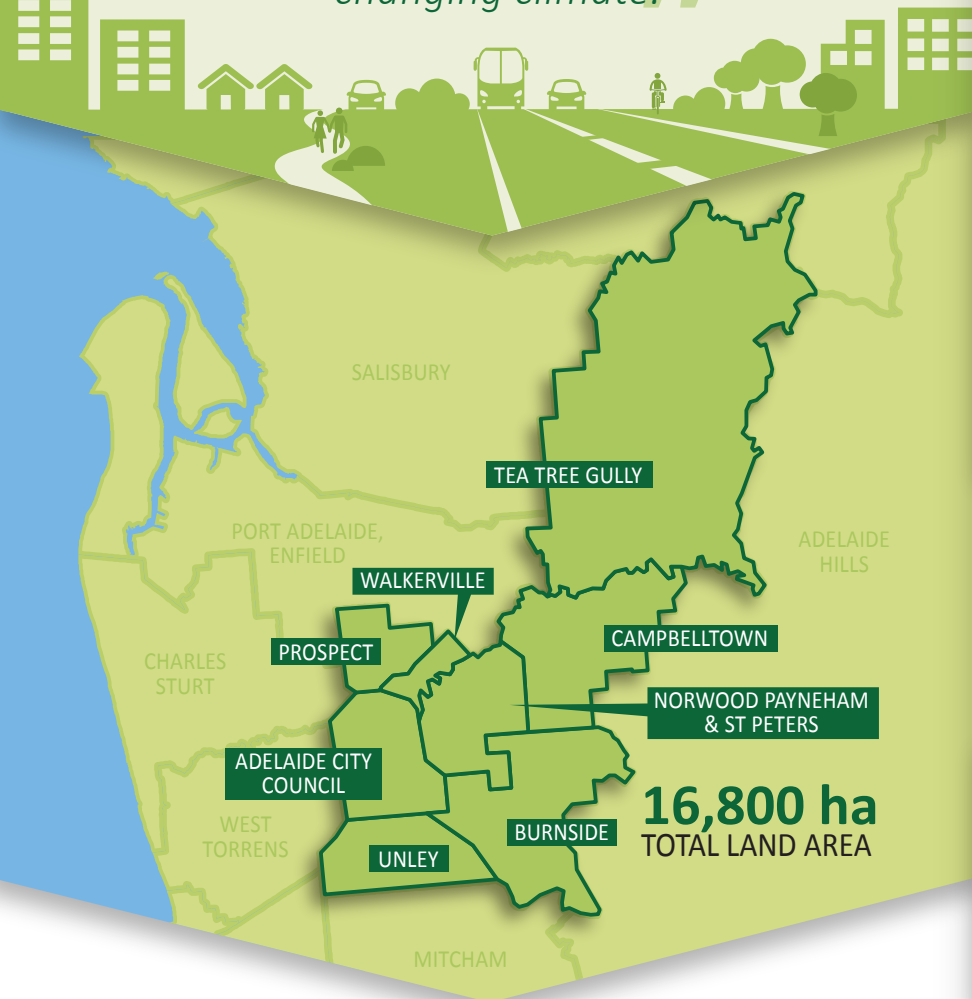


Resilient East is...

STAGE ONE

Understanding the Eastern Region & how the climate is changing

Resilient East is about exploring what we can do to make sure our businesses, communities and environments can respond positively to the challenges and opportunities of a changing climate.



Resilient East is a collaborative project being led by eight councils with funding from the South Australian and Federal Governments and working in partnership with the many and diverse organisations that have an interest and role in the long term vibrancy and vitality of the Eastern Region of metropolitan Adelaide.



EVENTS

Events of local, state, national and international significance, including, Royal Show, Clipsal 500, Tour Down Under, Festival of Arts, Adelaide Fringe and much more.

POPULATION

19%

of South Australia's population live in the Eastern Region of metropolitan Adelaide.

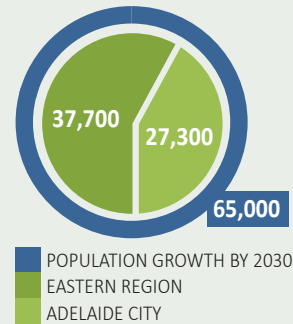
HEALTH

The people are healthy, with key demographic indicators showing lower than average levels of disadvantage throughout the community overall.

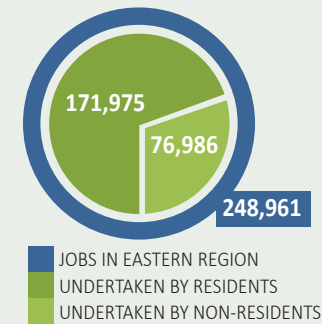
ECONOMY



GROWTH



JOBS



1,270 ha

of open space, including the Adelaide Park Lands and River Torrens Linear Park.

Diversity of natural water courses, constructed systems, wetlands, riparian habitat, groundwater and water sensitive urban design features.

2,480 ha

of the Eastern Region is remnant native vegetation, mostly in the Hills Face zone.

KEY ACTIVITY CENTRES

ADELAIDE CBD, BURNSIDE VILLAGE, TEA TREE PLAZA, THE PARADE, UNLEY ROAD, NEWTON, PROSPECT ROAD AND MORE.



55%
RESIDENTIAL AREAS



34%
OF HOUSING IS MEDIUM TO HIGH DENSITY



12%
COMMERCIAL + INDUSTRIAL AREAS



50%

OF HOMES HAVE 2 OR MORE VEHICLES

IN THE EASTERN REGION CLIMATE MODELS FORECAST CHANGES TO...



RAINFALL INTENSITY

The intensity of heavy rainfall events is projected to increase by at least 10% by 2050.



EXTREME TEMPERATURES

The number of days over 40° is projected to double by 2050. The frequency and duration of heatwaves is projected to increase.



AVERAGE ANNUAL RAINFALL

Average annual rainfall is projected to decrease by 7% by 2050. The greatest decline is projected for Spring rainfall.



AVERAGE TEMPERATURE

Average temperatures are projected to increase across all seasons by between 1.5° and 2.0° by 2050.



FIRE RISK

The number of extreme fire risk days is projected to increase by 200% by 2090.



STAGE 1... Understand the Eastern region and how the climate is changing.



STAGE 2... Assess how vulnerable the Eastern Region is.

STAGE 3... Produce an Adaptation Plan.