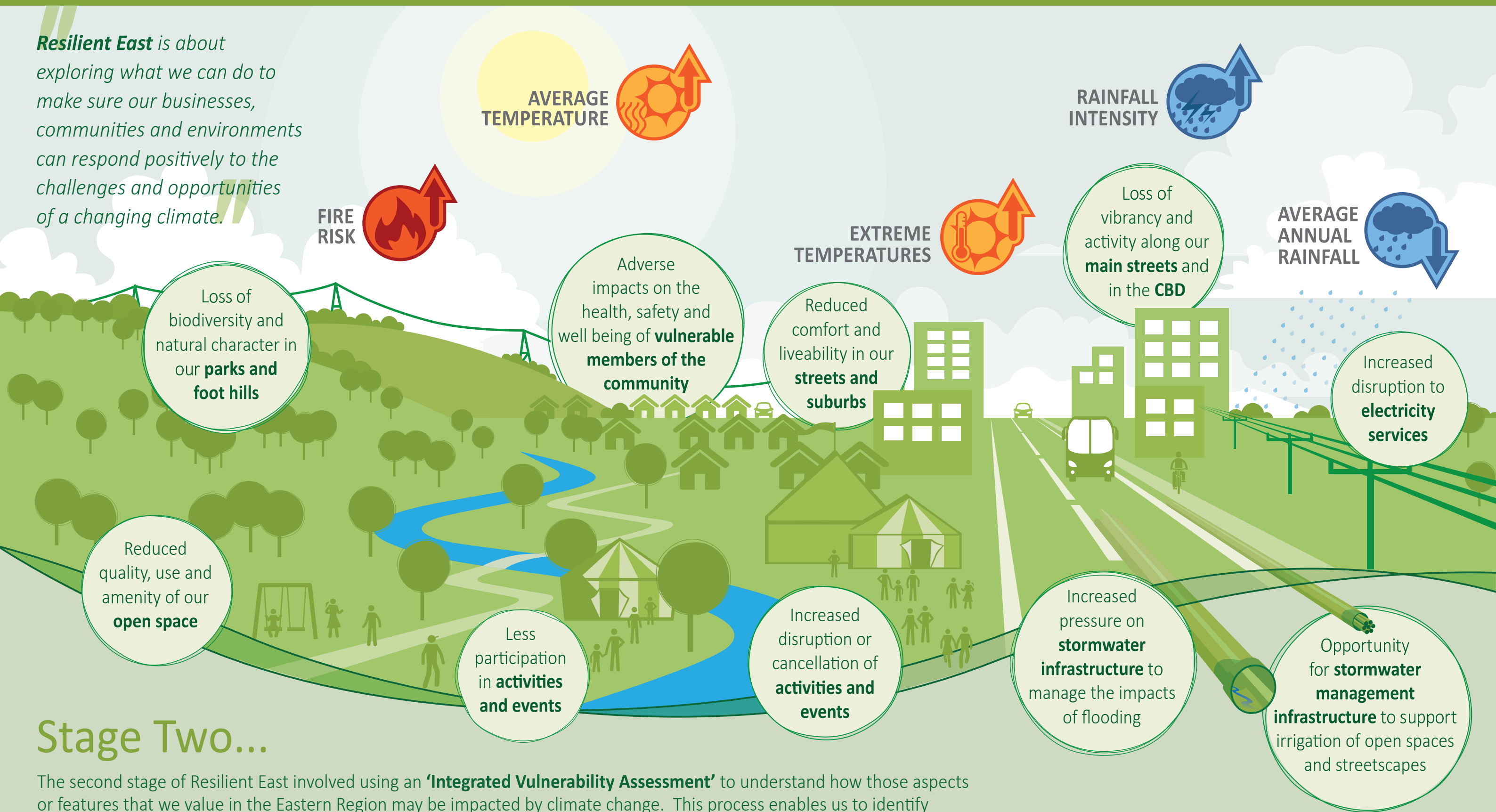


Resilient East...

STAGE TWO

Understanding the Eastern Region's vulnerability to a changing climate

Resilient East is about exploring what we can do to make sure our businesses, communities and environments can respond positively to the challenges and opportunities of a changing climate.



Stage Two...

The second stage of Resilient East involved using an **'Integrated Vulnerability Assessment'** to understand how those aspects or features that we value in the Eastern Region may be impacted by climate change. This process enables us to identify priority areas for focusing our attention in the next stage of the Resilient East project, developing an Adaptation Plan.

Resilient East is a collaborative project being led by eight councils with funding from the South Australian and Federal Governments and working in partnership with the many and diverse organisations that have an interest and role in the long term vibrancy and vitality of the Eastern Region of metropolitan Adelaide.

